



*TechSat* SARL

TRAFFIC LIGHT  
CATALOGUE

[techsat-dz.net](http://techsat-dz.net)

# TechSat<sup>SARL</sup>

FEUX TRICOLORES ET ECLAIRAGE PUBLIC

## TRAFFIC LIGHT PRODUCT **FANUS 300**

### PRODUCT **FANUS 300mm**

---

|                           |                                    |
|---------------------------|------------------------------------|
| Diameter                  | <b>300mm</b>                       |
| Housing Material Type     | <b>ALUMINIUM / PC</b>              |
| Housing Color             | <b>Black-Gray-Orange</b>           |
| Impact Resistance         | <b>IR3</b>                         |
| Vibration                 | <b>Class AJ3</b>                   |
| Ingress Protection        | <b>IP65</b>                        |
| Operating Temperature     | <b>-40°C to +70°C</b>              |
| Operating Voltage         | <b>170-265VAC or 12-24VDC</b>      |
| Minimum Shutdown Voltage  | <b>80V</b>                         |
| Total Harmonic Distortion | <b>&lt;%10</b>                     |
| Reaction Time             | <b>&lt;50 ms</b>                   |
| LED Red, yellow, green    | <b>Power LEDs / Multi LEDs 5mm</b> |
| Luminous Intensity (Cd)   | <b>&gt;400cd</b>                   |
| Signal Symbol             | <b>S1-S2</b>                       |
| Phantom Class             | <b>5</b>                           |
| Power Consumption         | <b>&lt;8W</b>                      |



**NEW**





## TRAFIC LIGHT PRODUCT **FANUS 200**

### PRODUCT **FANUS 200mm**

---

|                           |                                    |
|---------------------------|------------------------------------|
| Diameter                  | <b>200mm</b>                       |
| Housing Material Type     | <b>ALUMINIUM / PC</b>              |
| Housing Color             | <b>Black-Gray-Orange</b>           |
| Impact Resistance         | <b>IR3</b>                         |
| Vibration                 | <b>Class AJ3</b>                   |
| Ingress Protection        | <b>IP65</b>                        |
| Operating Temperature     | <b>-40°C to +70°C</b>              |
| Operating Voltage         | <b>170-265VAC or 12-24VDC</b>      |
| Minimum Shutdown Voltage  | <b>80V</b>                         |
| Total Harmonic Distortion | <b>&lt;%10</b>                     |
| Reaction Time             | <b>&lt;50 ms</b>                   |
| LED Red, yellow, green    | <b>Power LEDs / Multi LEDs 5mm</b> |
| Luminous Intensity (Cd)   | <b>&gt;400cd</b>                   |
| Signal Symbol             | <b>S1-S2</b>                       |
| Phantom Class             | <b>5</b>                           |
| Power Consumption         | <b>&lt;8W</b>                      |

## TRAFIC LIGHT PRODUCT FANUS 100

### PRODUCT FANUS 100mm

|                           |                        |
|---------------------------|------------------------|
| Diameter                  | 100mm                  |
| Housing Material Type     | ALUMINIUM / PC         |
| Housing Color             | Black-Gray-Orange      |
| Impact Resistance         | IR3                    |
| Vibration                 | Class AJ3              |
| Ingress Protection        | IP65                   |
| Operating Temperature     | -40°C to +70°C         |
| Operating Voltage         | 170-265VAC or 12-24VDC |
| Minimum Shutdown Voltage  | 80V                    |
| Total Harmonic Distortion | <%10                   |
| Reaction Time             | <50 ms                 |
| LED Red, yellow, green    | Multi LEDs 5mm         |
| Luminous Intensity (Cd)   | >400cd                 |
| Signal Symbol             | S1-S2                  |
| Phantom Class             | 5                      |
| Power Consumption         | <8W                    |



NEW



## TRAFFIC LIGHT PRODUCT **FANUS P200**

### PRODUCT **FANUS P 200mm**

|                           |                           |
|---------------------------|---------------------------|
| Diameter                  | 200mm                     |
| Housing Material Type     | ALUMINIUM / PC            |
| Housing Color             | Black-Gray-Orange         |
| Impact Resistance         | IR3                       |
| Vibration                 | Class AJ3                 |
| Ingress Protection        | IP65                      |
| Operating Temperature     | -40°C to +70°C            |
| Operating Voltage         | 170-265VAC or 12-24VDC    |
| Minimum Shutdown Voltage  | 80V                       |
| Total Harmonic Distortion | <%10                      |
| Reaction Time             | <50 ms                    |
| LED Red, yellow, green    | Multi LEDs 5mm /countdown |
| Luminous Intensity (Cd)   | >400cd                    |
| Signal Symbol             | S1-S2                     |
| Phantom Class             | 5                         |
| Power Consumption         | <8W                       |



# TechSat<sup>SARL</sup>

FEUX TRICOLORES ET ECLAIRAGE PUBLIC

## TRAFIC LIGHT PRODUCT CONTROLOR

### PRODUCT CONTROLOR

#### HOUSING

|                       |                |
|-----------------------|----------------|
| Housing Material Type | PC             |
| Ingress Protection    | IP65           |
| Operating Temperature | -40°C to +70°C |

#### CONTROL CIRCUIT

|                             |   |
|-----------------------------|---|
| PRODUCT RANGE               | ZELIO LOGIC                             |
| PRODUCT TYPE                | SMART MODULAR RELAY                     |
| LCD SCREEN                  | YES                                     |
| SUPPLY VOLTAGE              | 220 AC 24 DC                            |
| CONSUMPTION CURRENT         | 80 mA                                   |
| CONSUMPTION POWER           | 12 VA                                   |
| REVERSE POLARITY PROTECTION | YES                                     |
| FREQUENCY                   | 50/60 Hz                                |
| NUMBER OF TOR INPUTS        | 16                                      |
| NUMBER OF OUTPUTS           | 10-16 RELAYS (DYNAMIC / STATIC)         |
| EXTENDABLE                  | YES                                     |
| BLUETOOTH                   | YES                                     |
| ETHERNET                    | YES                                     |
| USB                         | YES                                     |
| MECHANICAL LIFE             | 1000000 CYCLE FOR RELAY OUTPUT          |
| RESPONSE TIME               | 50 ms                                   |
| IP                          | 40                                      |
| STANDARDS                   | IEC 61000-4-12 / IEC 60068-2-27Ea ..... |
| POLLUTION DEGREE            | 2 COMPLIANT WITH IEC 61131-2            |

#### POWER CIRCUIT

|  |                                   |
|--|-----------------------------------|
| PRODUCT RANGE                          | MINI SOLID STATE OR DYNAMIC RELAY |
| SUPPLY VOLTAGE                         | 220 V AC 24 V DC                  |
| LOAD OPERATION CYCLE                   | 100,000                           |
| PIN TYPE                               | FLAT (FASTON TYPE)                |
| MECHANICAL INDICATOR                   | YES                               |
| STAY BUTTON                            | YES                               |
| CONTACT TYPE                           | STANDARD AND LOW LEVEL            |
| DIM PROFILE MOUNTING ADAPTER           | YES                               |
| MOUNTING ADAPTER WITH MOUNTING BRACKET | YES                               |
| REFERENCES                             | RXM                               |



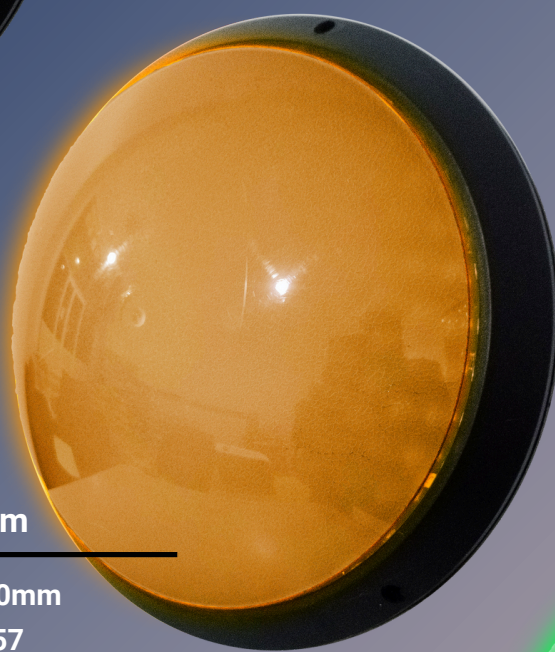
NEW



# TechSat<sup>SARL</sup>

FEUX TRICOLORES ET ECLAIRAGE PUBLIC

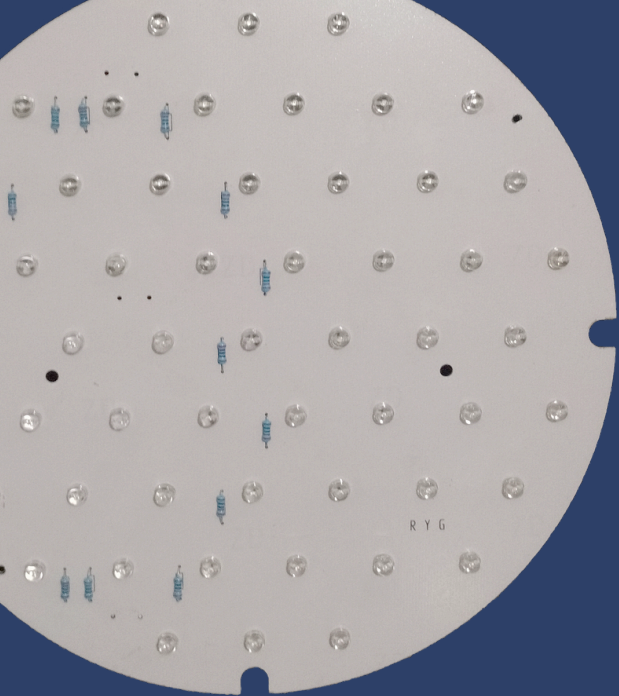
## OPTIC 300



### PRODUCT OPTIC 300mm

|                           |                        |
|---------------------------|------------------------|
| Diameter                  | 300mm                  |
| Ingress Protection        | IP57                   |
| Operating Temperature     | -40°C to +70°C         |
| Operating Voltage         | 170-265VAC or 12-24VDC |
| Minimum Shutdown Voltage  | 80V                    |
| Total Harmonic Distortion | <%10                   |
| Reaction Time             | <50 ms                 |
| LED Red, yellow, green    | Multi LEDs 5mm         |
| Luminous Intensity (Cd)   | >400cd                 |
| Signal Symbol             | S1-S2                  |
| Phantom Class             | 5                      |
| Power Consumption         | <8W                    |

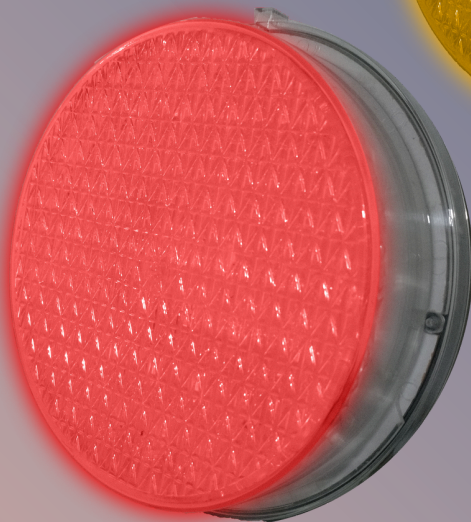
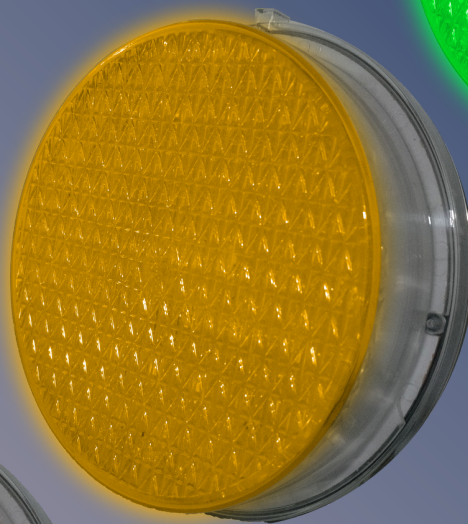
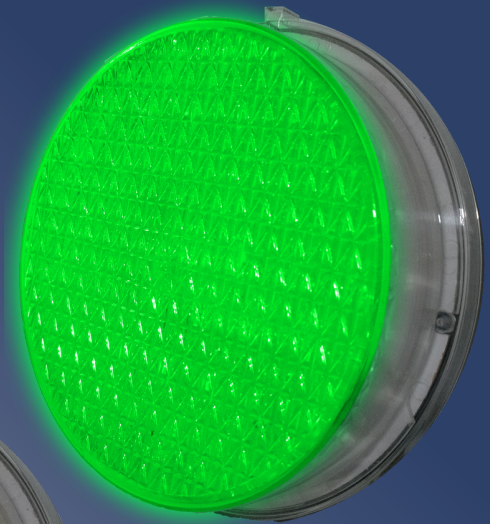




# TechSat<sup>SARL</sup>

FEUX TRICOLORES ET ECLAIRAGE PUBLIC

## OPTIC 200



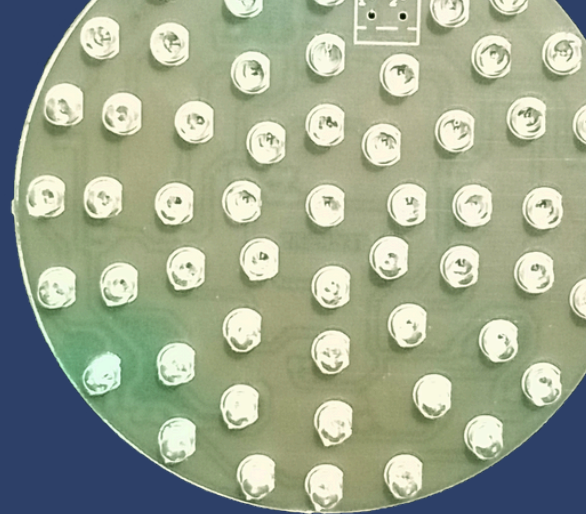
### PRODUCT OPTIC 200mm

|                           |                        |
|---------------------------|------------------------|
| Diameter                  | 200mm                  |
| Ingress Protection        | IP57                   |
| Operating Temperature     | -40°C to +70°C         |
| Operating Voltage         | 170-265VAC or 12-24VDC |
| Minimum Shutdown Voltage  | 80V                    |
| Total Harmonic Distortion | <%10                   |
| Reaction Time             | <50 ms                 |
| LED Red, yellow, green    | Multi LEDs 5mm         |
| Luminous Intensity (Cd)   | >400cd                 |
| Signal Symbol             | S1-S2                  |
| Phantom Class             | 5                      |
| Power Consumption         | <8W                    |



# TechSat<sup>SARL</sup>

FEUX TRICOLORES ET ECLAIRAGE PUBLIC



## OPTIC 100



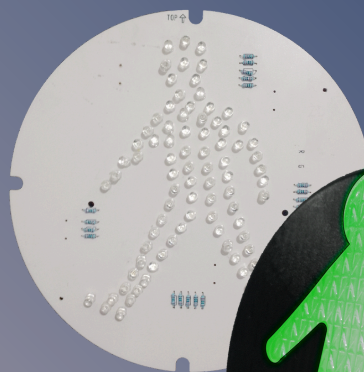
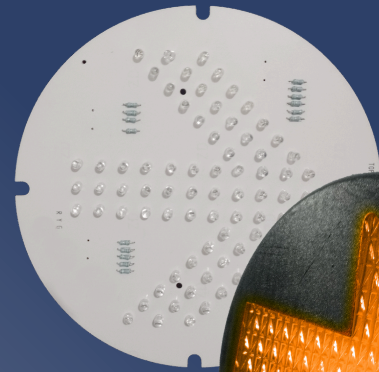
### PRODUCT OPTIC 100mm

|                           |                        |
|---------------------------|------------------------|
| Diameter                  | 100mm                  |
| Ingress Protection        | IP57                   |
| Operating Temperature     | -40°C to +70°C         |
| Operating Voltage         | 170-265VAC or 12-24VDC |
| Minimum Shutdown Voltage  | 80V                    |
| Total Harmonic Distortion | <%10                   |
| Reaction Time             | <50 ms                 |
| LED Red, yellow, green    | Multi LEDs 5mm         |
| Luminous Intensity (Cd)   | >400cd                 |
| Signal Symbol             | S1-S2                  |
| Phantom Class             | 5                      |
| Power Consumption         | <8W                    |

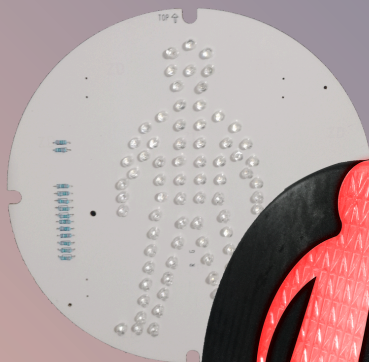
# TechSat<sup>SARL</sup>

FEUX TRICOLORES ET ECLAIRAGE PUBLIC

## OPTIC P/TD 200



PRODUCT OPTIC P/TD 200mm



|                           |                             |
|---------------------------|-----------------------------|
| Diameter                  | 200mm                       |
| Ingress Protection        | IP57                        |
| Operating Temperature     | -40°C to +70°C              |
| Operating Voltage         | 170-265VAC or 12-24VDC      |
| Minimum Shutdown Voltage  | 80V                         |
| Total Harmonic Distortion | <%10                        |
| Reaction Time             | <50 ms                      |
| LED Red, yellow, green    | Power LEDs / Multi LEDs 5mm |
| Luminous Intensity (Cd)   | >400cd                      |
| Signal Symbol             | S1-S2                       |
| Phantom Class             | 5                           |
| Power Consumption         | <8W                         |



# TechSat<sup>SARL</sup>

FEUX TRICOLORES ET ECLAIRAGE PUBLIC

**OPTIC  
300/200  
POWER LED**

## PRODUCT OPTIC 300/200mm

|                           |                        |
|---------------------------|------------------------|
| Diameter                  | 300/200mm              |
| Ingress Protection        | IP57                   |
| Operating Temperature     | -40°C to +70°C         |
| Operating Voltage         | 170-265VAC or 12-24VDC |
| Minimum Shutdown Voltage  | 80V                    |
| Total Harmonic Distortion | <%10                   |
| Reaction Time             | <50 ms                 |
| LED Red, yellow, green    | power led              |
| Luminous Intensity (Cd)   | >400cd                 |
| Signal Symbol             | S1-S2                  |
| Phantom Class             | 5                      |
| Power Consumption         | <8W                    |



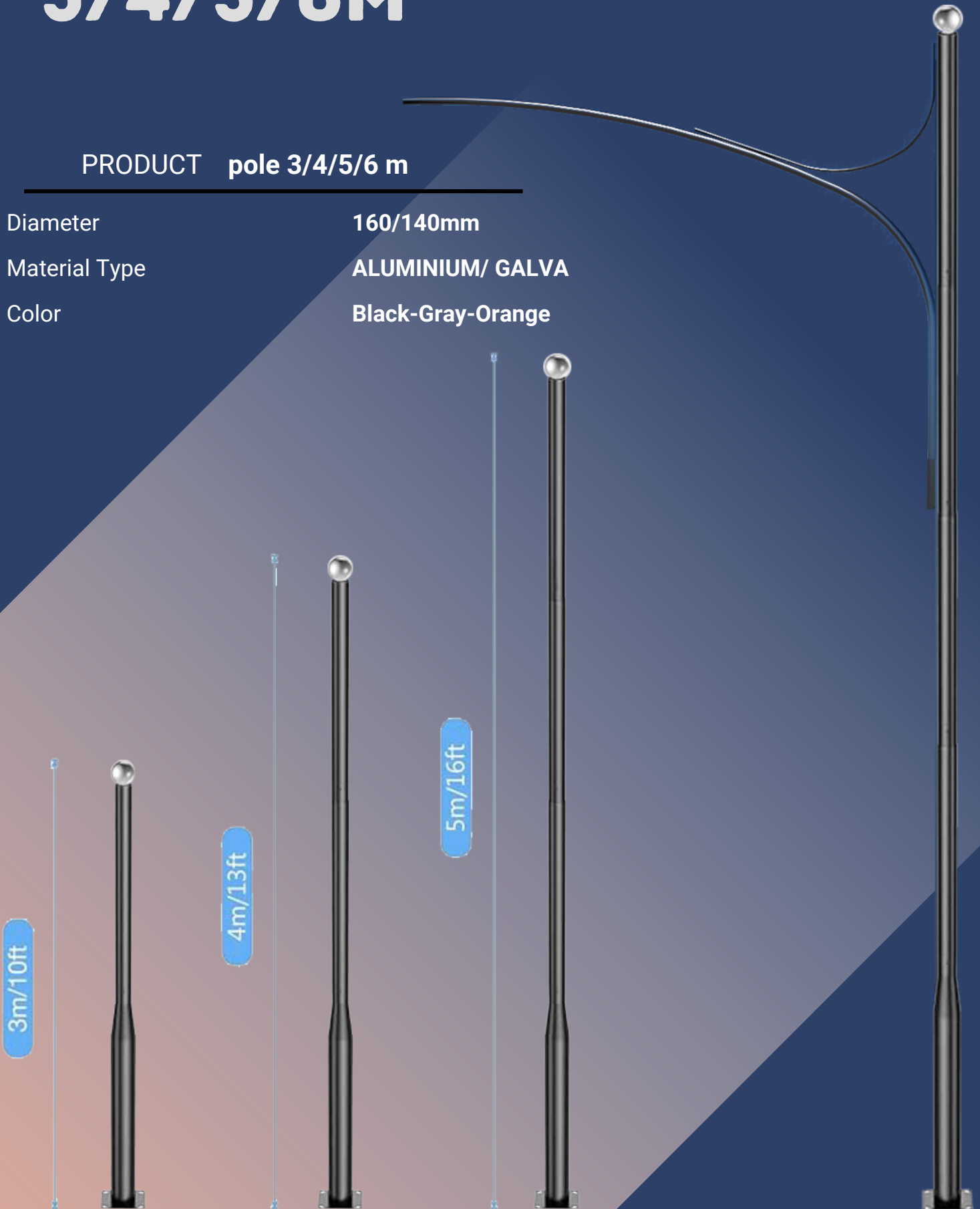
# TechSat<sup>SARL</sup>

FEUX TRICOLORES ET ECLAIRAGE PUBLIC

## POLE 3/4/5/6M

PRODUCT pole 3/4/5/6 m

|               |                   |
|---------------|-------------------|
| Diameter      | 160/140mm         |
| Material Type | ALUMINIUM/ GALVA  |
| Color         | Black-Gray-Orange |







## TRAFIC LIGHT PRODUCT **FANUS STUDENT**



### PRODUCT **FANUS student**

|                           |                             |
|---------------------------|-----------------------------|
| Diameter                  | 200mm                       |
| Housing Material Type     | ALUMINIUM / PC              |
| Housing Color             | Black-Gray-Orange           |
| Impact Resistance         | IR3                         |
| Vibration                 | Class AJ3                   |
| Ingress Protection        | IP65                        |
| Operating Temperature     | -40°C to +70°C              |
| Operating Voltage         | 170-265VAC or 12-24VDC      |
| Minimum Shutdown Voltage  | 80V                         |
| Total Harmonic Distortion | <%10                        |
| Reaction Time             | <50 ms                      |
| LED Red, yellow, green    | Power LEDs / Multi LEDs 5mm |
| Luminous Intensity (Cd)   | >400cd                      |
| Signal Symbol             | S1-S2                       |
| Phantom Class             | 5                           |
| Power Consumption         | <8W                         |



## ORIENTATION ROAD SIGNS

### PRODUCT Orientation Road Signs

|                            |                        |
|----------------------------|------------------------|
| Dimention                  | 140x40x18cm            |
| Housing Material Type      | ALUMINIUM / PC         |
| Housing Color              | Black-Gray-Orange      |
| Impact Resistance          | IR3                    |
| Vibration                  | Class AJ3              |
| Ingress Protection         | IP65                   |
| Operating Temperature      | -40°C to +70°C         |
| Operating Voltage          | 170-265VAC or 12-24VDC |
| Minimum Shutdown Voltage   | 80V                    |
| Total Harmonic Distortion  | <%10                   |
| Reaction Time              | <50 ms                 |
| LED Red,yellow,green,wight | LED                    |
| Luminous Intensity (Cd)    | >400cd                 |
| Signal Symbol              | S1-S2                  |
| Phantom Class              | 5                      |
| Power Consumption          | <8W                    |



# TechSat<sup>SARL</sup>

FEUX TRICOLORS ET ECLAIRAGE PUBLIC



REFERENCES  
20 YEARS



*TechSat*<sup>SARL</sup>

FEUX TRICOLORES ET ECLAIRAGE PUBLIC

# CONTACT US



+213 661131898 / +213 772131898  
+213 40767306 / +213 774304661



[techsateurl@yahoo.com](mailto:techsateurl@yahoo.com)



city Belhouari Med D123 n123,  
Tiaret, Algeria



[techsat-dz.net](http://techsat-dz.net)